



PRODUCT OVERVIEW

OCEAN MASTER MEGA MAX

The Ocean Master MEGA MAX is available to suit all large outdoor space shade needs. With sizes ranging from 16.0 ft to 24.0 ft, multiple tables or lounge areas are easily shaded with a single parasol. The expensive shaded area creates the perfect setting for flexible use spaces with a multitude of experiences.

FEATURES



Hub



Screw Pocket Construction



2" Reinforced Ribs



Reinforced Strut Joint Connector



Mast



Telescoping Mast with EasyDrive Crank Lift System

FINISH OPTIONS

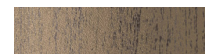
PLANTATION ALUMA-TEAK



Java



Natural



Weathered

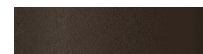
POWDER COAT



Black Sea



Graphite



Espresso



Night Fog



Oyster



Sandbar



Glacier White



Silver Sand

SHAPE & SIZES



Square

ft. / m.
16.0' / 4.9
20.0' / 6
24.0' / 7.4



Round

ft. / m.
16.0' / 4.9
20.0' / 6
24.0' / 7.4



Rectangle

ft. / m.
14.0' x 20.0' / 4.25 x 6
16.0' x 24.0' / 4.9 x 7.4
18.0' x 24.0' / 5.5 x 7.4